



But you will receive power when the Holy Spirit comes upon you. And you will be my witnesses, telling people about me everywhere—in Jerusalem, throughout Judea, in Samaria, and to the ends of the earth.”

Acts 1:8 (NLT)

Looking Ahead.



ANNUAL REPORT

2018

**VIDAR AND CATHRINE
LIGARD**

From the Directors.

2018 has been a year of growth for Safari Mission. Our Nairobi campus maxed out our facilities as the students completed their first year of training. The students come from all walks of life, from

senior pastors, ministry of helps leaders, to business professionals, lawyers, and entrepreneurs. As the students have been grounded in God's Word, their lives and ministries have changed. Many students commented that the Personal Development class made them realize that where they are today is the result of their own decisions, and not random circumstance. During our first annual ministers retreat, we heard amazing reports of what our alumni are accomplishing all over Kenya. Testimonies of how the graduates are gaining influence and are able to minister to even the hardest people to reach are becoming common. Together with you, we are changing a nation one leader at a time. By building leaders, we are building Africa!





The Safari Mission Difference:

At Safari Mission, we train leaders and transform people in East Africa. It is the marvelous story that has been unfolding since 2006. In order to make a lasting impact, we build with excellence, using a method that is proven to be effective. Some of the key ingredients of this method include:

A LONG TERM STRATEGY THAT PRODUCES EFFECTIVE RESULTS

We focus on giving people the knowledge and the tools they need to build their own lives and the community around them. These are long term methods that solve the real problem. Instead of offering quick band-aid fixes that help immediate needs in the short term and create long term dependency problems, we give people what they need to succeed in life. We do this in a way that does not create dependency on us.

LOCAL EMPOWERMENT

At Safari Mission, almost all the work is done by Kenyans. We empower the people of East Africa. Our finance officers, school administrators and managers are Africans, and we have a team of 25 Kenyan instructors that teach and train leaders. Instead of hiring leaders from developed countries, we develop leaders and involve them in key positions.

FINANCIAL EFFICIENCY AND TRANSPARENCY

We emphasize effective and results-oriented use of funds, strong accountability systems, and all our financials are published for transparency and inspection. At Safari Mission, we have lots of results on a small budget.

GOSPEL BASED MISSIONS

The gospel of Christ is the power of God for salvation and transformation. This is the core message that drives the development of communities. In many areas, the humanitarian needs are so great, that many forget the importance of sharing Christ with people. A genuine heart change is the most effective way to get people out of poverty, selfishness, greed, corruption, lying and stealing. And the message of Christ is the most effective way to have such heart changes.



GEORGE MATHU

I'm a pastor in Nairobi. I've been pastoring for 17 years and I've never been trained in pastoring, so school was a culture shock for me. It's awesome—I'm learning new things everyday. Every module you go in, you feel like "this is it". I always felt that in life there were "aha" moments. For me in school, it was the Personal Development class. It was absolutely amazing. So revolutionary. It changed the way I think, my budgeting, everything. It's been amazing. Thank you, thank you, thank you.



Finished Nairobi 1st year

The startup of the Nairobi campus has been an incredible journey. We maxed out our facilities in the first year and have gained a good reputation among many church leaders in the city. Seeing the growth in the students' lives is encouraging and brings hope for a changed Africa. On a continent that is crippled with corruption, the truth of God's Word sets people free from greed, selfishness, and lies. Being part of changing the way people think is at the heart of Safari Mission.



First Annual Ministers Retreat

In October, we hosted our first annual ministers retreat. The goal with this retreat is to bring ministers together for a time of refreshing, fellowship, and training. Rev. John Huizing and his wife were with us during these three days and shared with the ministers a wealth of knowledge that they have gained from their 30+ experience in ministry. Alumni from most of our campuses attended the retreat and gave amazing reports of the work they continue to do in their respective areas.



KENNETH LAMU

My business involves marketing, communicating, advertising, digital marketing, public relations, events, and management. I came to school to be grounded in the Word, and that's what happened. I have come to know who I am in Christ and I am able to do that which God wants me to do. When I joined Rhema, I got a confirmation that I have a healing ministry. In my neighborhood, there was a woman who was wheeled out in an ambulance almost every week. I felt it within me that I needed to pray for her. When I finally met her, I prayed with her for two or three days, and then she was healed! She went to the doctor and received a good report, and the doctor even called me to ask who I was and how I was praying for her . . . I could only have done that through the grounding of the Word.



East Africa Faith Conference

In May, we hosted our second East Africa Faith Conference and people from multiple African countries were represented. Our speakers included Mark Hankins, Chad Gonzales, Philip Slaughter, Tokunbo Adejuwon, and Vidar Ligard. Attendees commented on how the teachings were helping them, and that they returned to their respective circles of influence with new knowledge and revelation. Many are making plans to come back for the conference next year.



Military Police Graduation

Together with the Kenyan government, we graduated 35 military police chaplains. These chaplains are stationed all throughout Kenya, and often in volatile areas like the boarder to Somalia and South Sudan. In addition to providing spiritual support to other military men and women, they also open up churches for the local communities where they are stationed. Since many of them work in harsh and unreached areas, they are in a unique position to spread the good news of the gospel to unreached people groups. We are thankful for the opportunity to train them as they are serving their country and the Lord Jesus Christ in these areas.

NELLY CASTER

In school I learned that we all have a purpose, we all have a reason to be here. As I came in, I wasn't necessarily a pastor or anyone in the five-fold ministry. I have been just a minister in worship and in helps. I have learned to walk in faith, that there's a practical aspect to faith. You have to walk out what you believe. I didn't have the finances to be here, but faith worked for me. I have seen God come through for me, provide the fees, provide the food—I have literally seen God do it for me, just from standing on His word and confessing it. These are things that I learned in class





Leaders trained

Due to the school module we have established, we are able to train men and women in the word of God all over Kenya, both in rural and urban areas. One of our campuses is in a remote and unstable area on the border to Somalia, while another campus is in the middle of the business district of the capital and East African hub, Nairobi. At Safari Mission, we strive to reach people from all walks of life in order to transform their lives with the word of God. We have seen the same change in people's lives both in Nairobi and in rural areas, because the gospel message is relevant in any culture and transcends economic and social boundaries.



Local team opening new campuses

One of our main goals is to empower the locals to become leaders and be involved in our ministry on all levels. That is why all the team members in Kenya are local alumni who we continually train and mentor. As new campuses are being started in Kenya, the local regional offices will be responsible for opening new campuses with only minimal involvement from overseas. One of the local overseers is already working on opening a new campus in his region.



1999

Vidar started short-term trips to Kenya for leadership seminars with a focus on remote areas.



2006

Safari Mission opened the Bible school campus in the rural town of Mwingi. Vidar was the only instructor.



2008

Safari Mission holds its first graduation of first year students.



2009

Malindi campus and Kitui campus open.



2004

After several years of doing short-term mission trips, Vidar realizes that the pastors need more than just a seminar – they need a school.



2007

Safari Mission operates Bible schools in Mwingi, Mombasa, Kisumu, and Keroka on a modular basis.



Safari Mission purchases land in Mombasa for a permanent office. The construction of the new administration building and educational center starts.





2011

Garsen campus is opened on the border to Somalia.



2013

First 2nd year graduation



2014

Administrative building makes progress



2017

We host the very first East Africa Faith Conference, the Nairobi Campus starts, and Safari Distribution Center is opened



2012

2nd year studies are opened for those who desire more education. This is done at the Mombasa campus. Zombe campus opens.



2016

More campuses are opened in Loitokitok and with the Military Police. Phase I of the administrative building in Mombasa is finished and the building is put in use



2018

We have over 25 local instructors and we hosted our first annual minister's retreat



2019

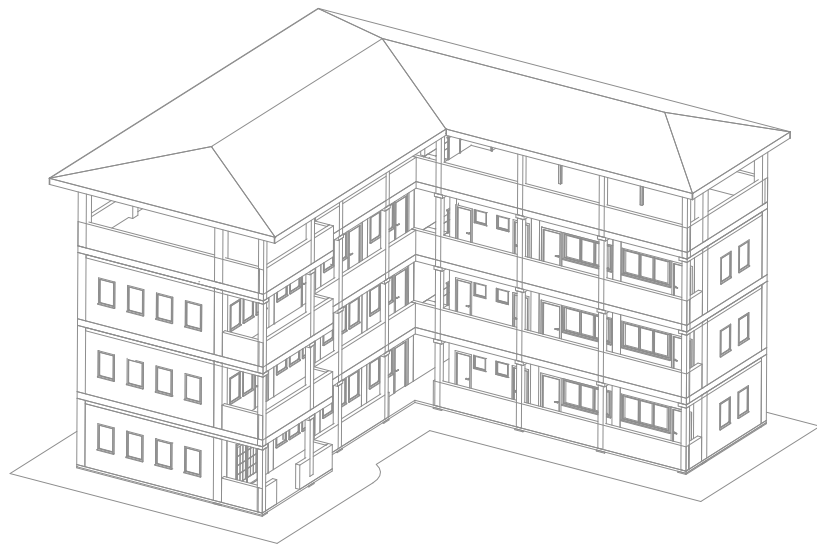
Second year starts at the Nairobi campus



STEVEN GITENDE

I am a pastor with a background in manufacturing. I came here to enlarge my understanding and better understand my walk with God. The personal development class has opened my eyes to the understanding that I am where I am because of what I've either done or not done, and has opened my eyes to the potential of what can be. It is inspiring me. I have made my personal growth, my future, my walk with the Lord, and increasing in every area of my life my responsibility. One of my goals is to keep growing in knowledge and wisdom in every area of my life. It's a lifelong goal.





Building Phase II

The building in Mombasa has classroom, offices and dormitory space. Phase I is complete, and Phase II is under construction. This second phase will have additional office space, classrooms, dormitories for 40 students, library and teacher apartments. At \$40 per sq. ft., the cost is \$250,000 for 6,250 sq. ft.

Initial trips to Congo

Starting in January 2019, we will begin making initial trips into Congo. There are many pastors in Congo who are eager to receive training, and the initial trips will help us determine the possibility of a Bible school in the remote areas of Eastern Congo. Infrastructure is a big problem in Congo and in many areas there are no roads. That means to some of the areas we are looking into going will require chartering a plane just to get in there. The initial trips are estimated to cost \$25,000.





Expanding local teacher pool

Most of the teachers at our schools are local instructors who have already graduated and proven themselves of good character and teaching ability. We will be having another teacher training in the fall and are looking to expand our local teacher pool. Many students from various campuses have commented on how the local instructors are of the same quality as the international instructors that we bring in, so it is very important for us to retain this high quality of all of our instructors. That is why we spend resources on continual training of new and existing instructors, as this ensures the quality of our schools. Estimated cost of training \$4,500.

Establishing regional offices

With a growing number of campuses being added to the school, there is also a need for better structure and organization. We are moving toward the establishment of 3 regional permanent offices that each will be responsible for multiple campuses. This will enable both the office and student to have better communication, which will cause better oversight and better organization. Estimated annual budget for 3 offices \$ 30,000.



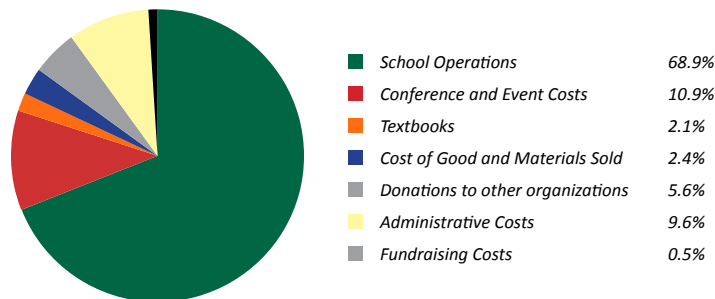
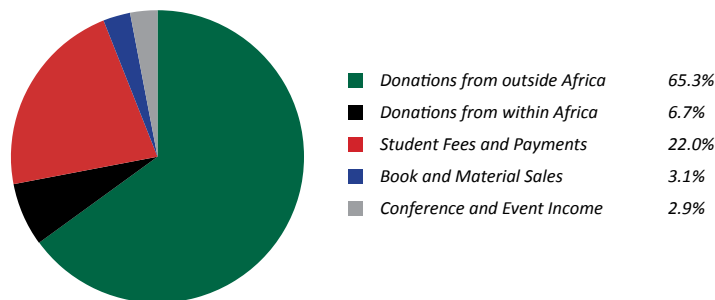


Regional conferences

In order to grow the awareness of our Bible school and increase student enrollment, we are hosting some regional conferences in 2019. This will be in addition to our main conference in Nairobi and will help the awareness of the school outside the Nairobi area. The conferences will have speakers that are alumni of the school, as well as the Directors of the school. Estimated annual conference budgets \$35,000.

Financial Summary

Consolidated Statement of Activities



REVENUE

Donations from outside Africa	\$241,927
Donations from within Africa	\$24,865
Student Fees and Payments	\$81,395
Book and Material Sales	\$11,508
Conference and Event Income	\$10,636
TOTAL UNRESTRICTED REVENUE	\$370,331

OPERATING PROGRAM EXPENSES

School Operations	\$217,100
Conference and Event Expenses	\$34,312
Textbooks	\$6,551
Cost of Books and Materials Sold	\$7,651
Donations to Other Non-Profits	\$17,652
TOTAL PROGRAM EXPENSES	\$283,265

OPERATING SUPPORTIVE EXPENSES

Administrative Costs	\$30,318
Fundraising Costs	\$1,448
Total Support Expenses	\$31,766
TOTAL OPERATING EXPENSES	\$315,031

Combined activities for Safari Mission USA, Norway and Kenya. Numbers are based on Q1-Q3 2018 and estimates for Q4 2018. For detailed reports for 2017 or 2018, please contact us.



Impact Statistics



over 1,800 hours

OF BIBLE AND LEADERSHIP LESSONS
TAUGHT IN 2018

25

KENYAN TEAM MEMBERS

over 140 Churches

ARE PASTORED BY GRADUATES

Countless

REPORTS OF PEOPLE SAVED, HEALED, NEW
CHURCHES STARTED BY STUDENTS AND GRADUATES



IF YOU WOULD LIKE TO PARTNER WITH SAFARI MISSION, TRAIN LEADERS AND TRANSFORM PEOPLE IN EAST AFRICA, VISIT US ON SAFARIMISSION.ORG



Thank You

SAFARI MISSION USA
PO BOX 932
BROKEN ARROW OK 74013
1 918 376 0376

SAFARI MISSION NORWAY
FR. NANSENS GT 6
3679 NOTODDEN
KONTNR 2601.31.16716

SAFARI MISSION KENYA
PO BOX 14085
00800 WESTLANDS
+254 728 141513



WWW.SAFARIMISSION.ORG | WWW.RHEMAKENYA.ORG | OFFICE@SAFARIMISSION.ORG